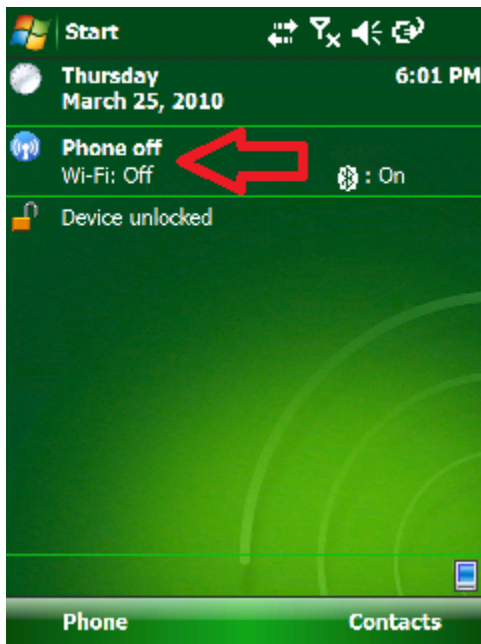


## Connecting CHC X91+ Rover to NTRIP Network

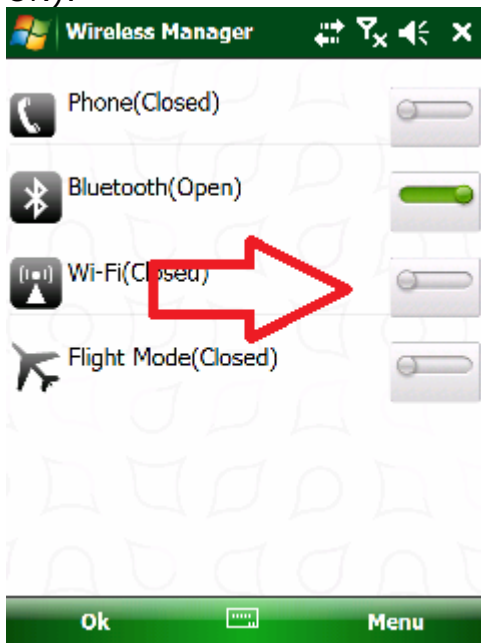
10 October 2013, Mark Silver, ms@igage.com

### Connect Data Collector to Internet

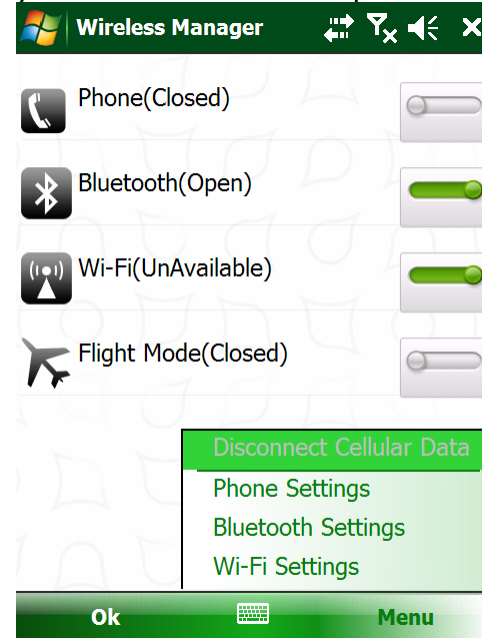
From the main menu of the data collector, click on the 'Wireless Manager':



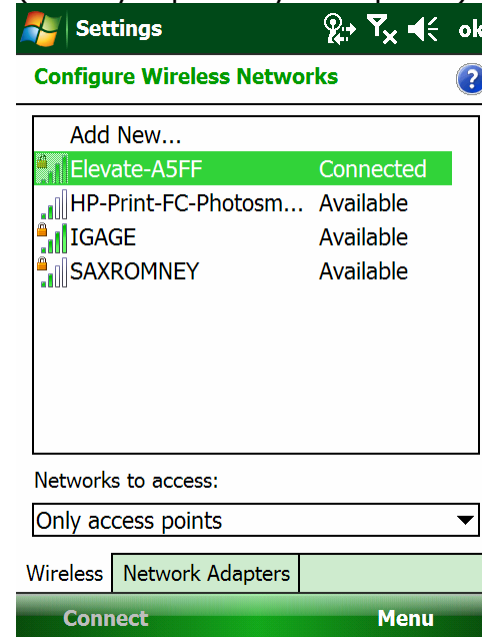
Click on 'Wi-Fi' if it is not Open (which means ON):



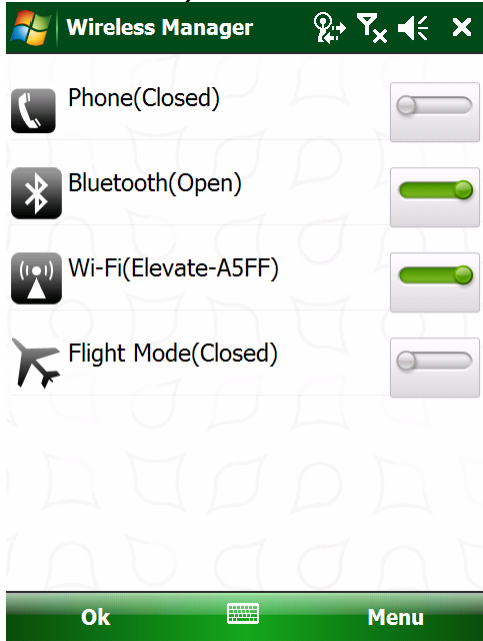
Click on 'Menu: Wi-Fi Settings' to connect to your MiFi wireless hotspot:



Click on your wireless hotspot in the list and take the necessary actions to connect (usually a passkey is required):



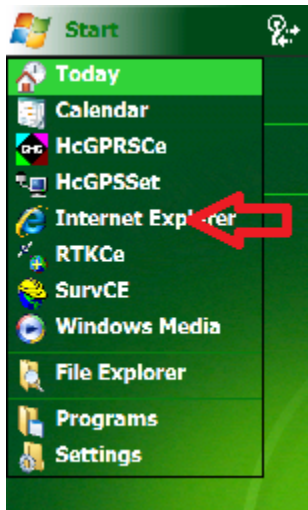
Once 'Connected', click on "ok" (upper right hand corner):



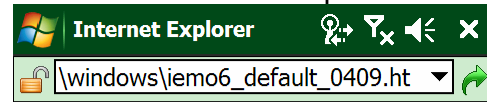
Finally click on "Ok" on lower left corner. You should be connected to the internet. It is usually worth the time to check and make sure. Click on the start flag on the upper left corner:



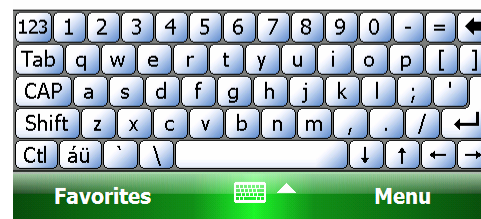
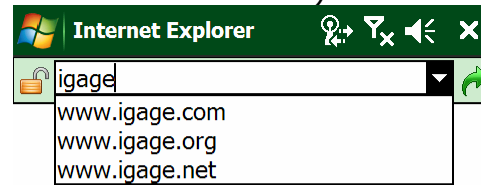
Then click on 'Internet Explorer':



From the Internet Explorer:



Enter an address (by clicking on the address bar, then the keyboard on the bottom and enter a web address):

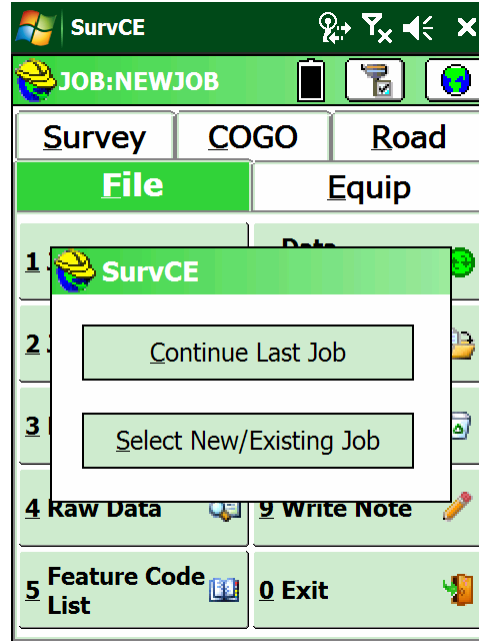
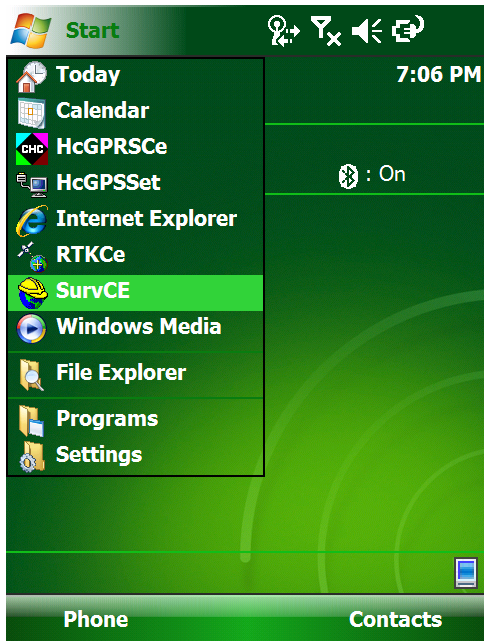


After a second the test web site should be displayed:

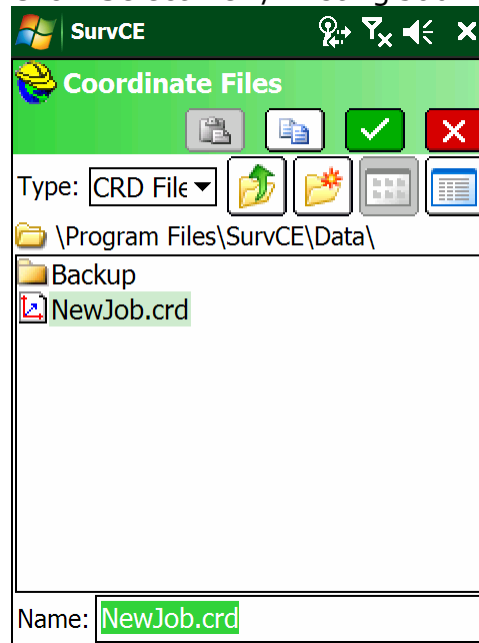


### Start SurvCE

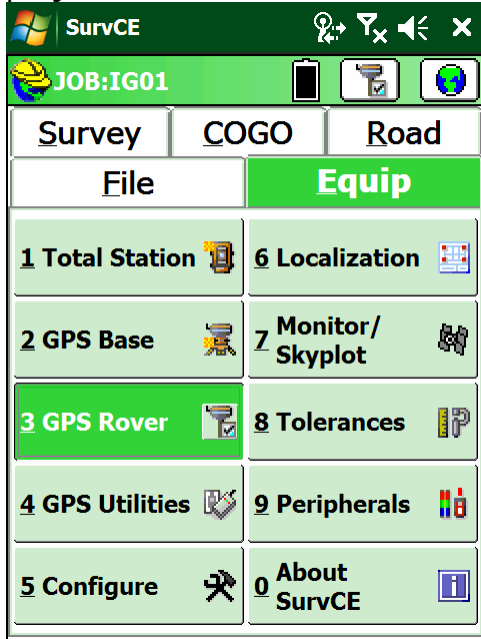
Click on 'Start' and then SurvCE:



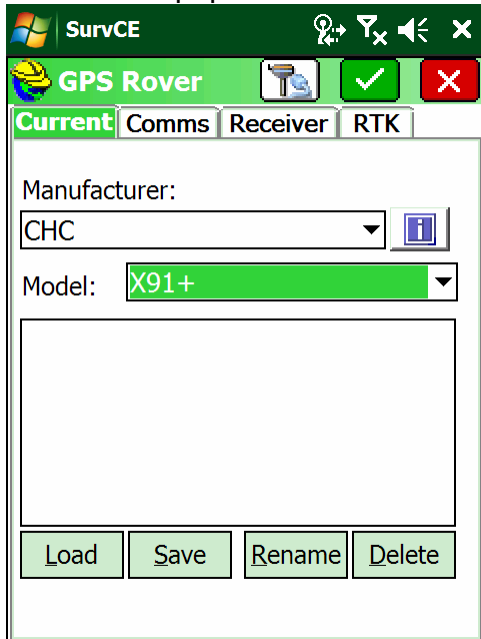
Click 'Select New/Existing Job':



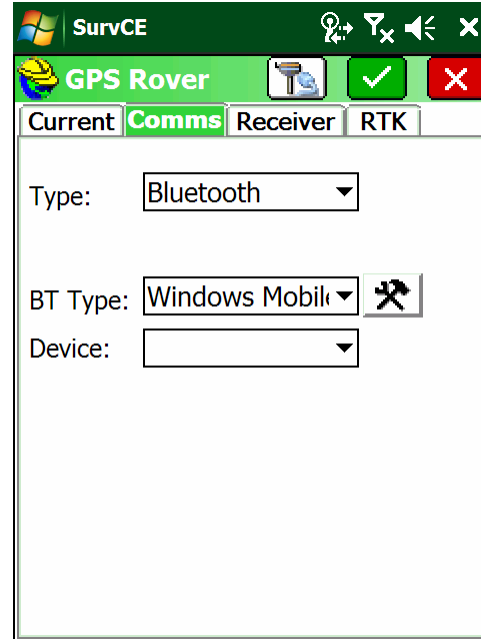
Enter an appropriate job name, select a projection:



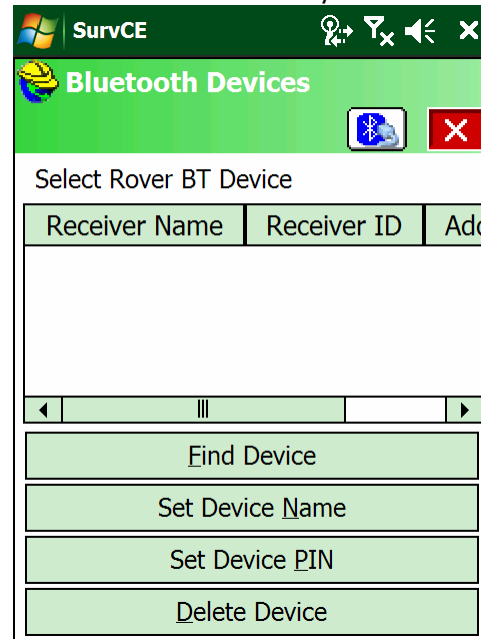
Click on "Equip: 3 GPS Rover":



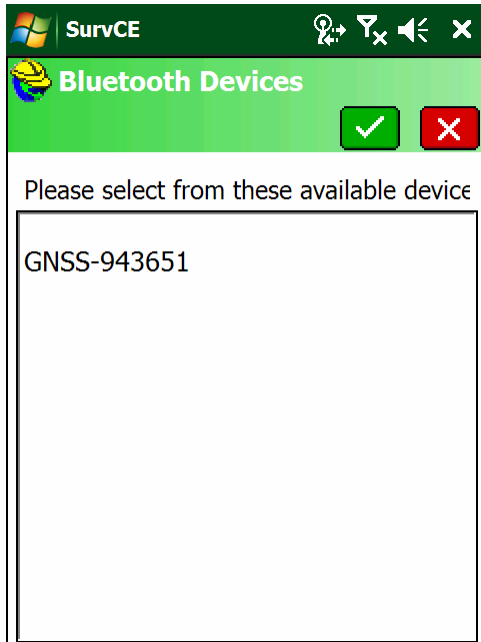
Select Manufacturer: CHC; Model: X91+  
Then click on the 'Comms' tab



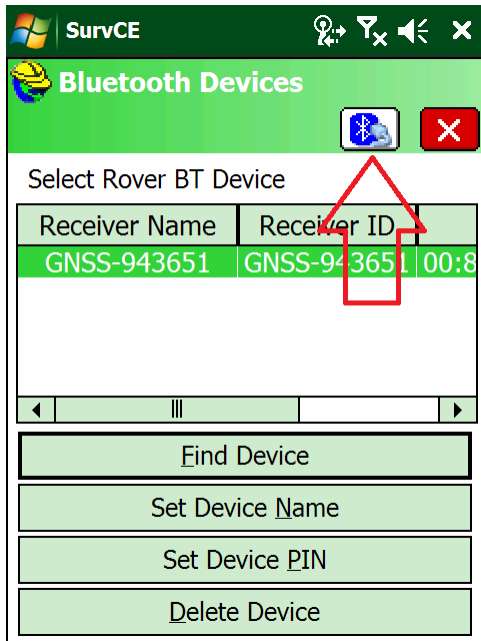
Select Type: Bluetooth; BT Type Windows Mobile and then click on the 'hammer/wrench' button:



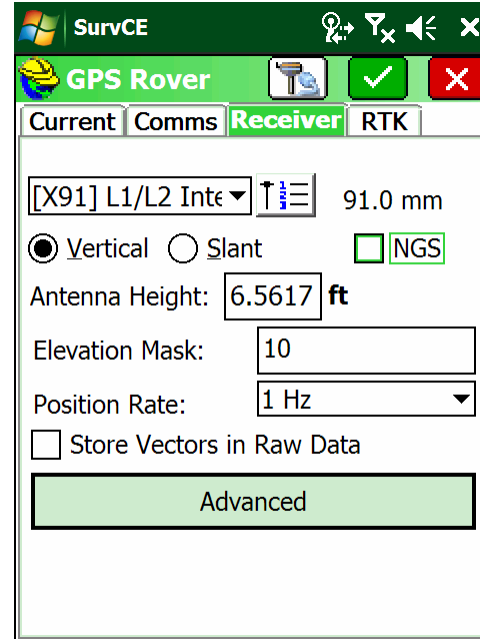
Click on 'Find Device':



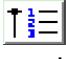
Click on the device that matches your device serial number, then click on the Green Check Mark:

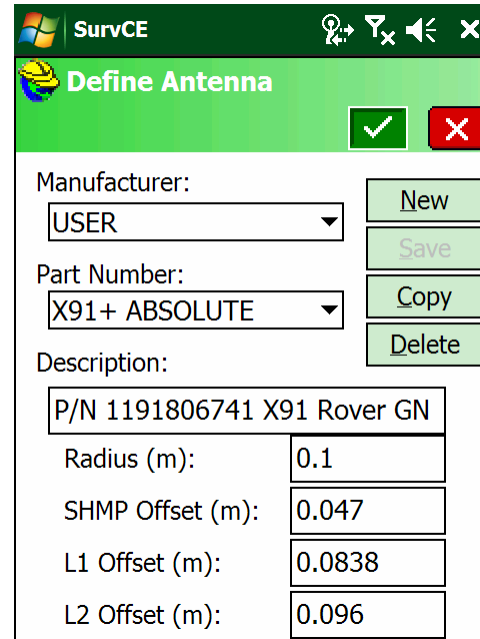


Click on the 'Bluetooth Connect' button, then select the 'Receiver' tab:

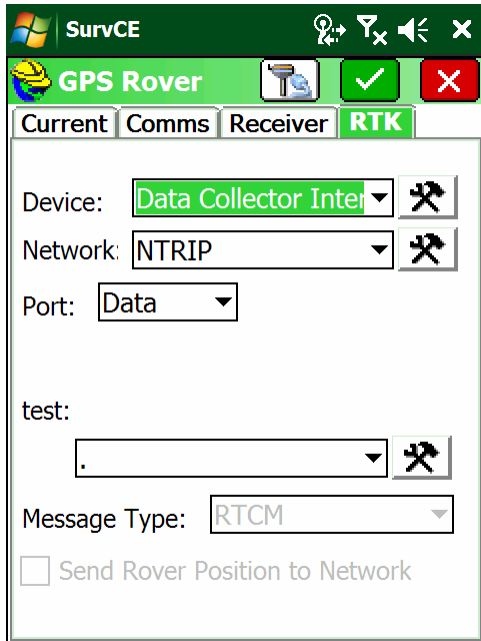


Set the 'Antenna Height' to match your pole. Hint: if you have a 2 meter pole you can enter "2M" and SurvCE will compute 6.5617 feet.

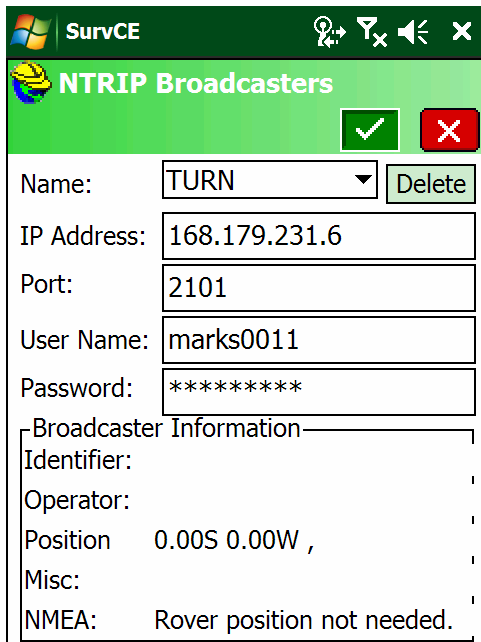
If you click on the  button, the Antenna Definition should match this:



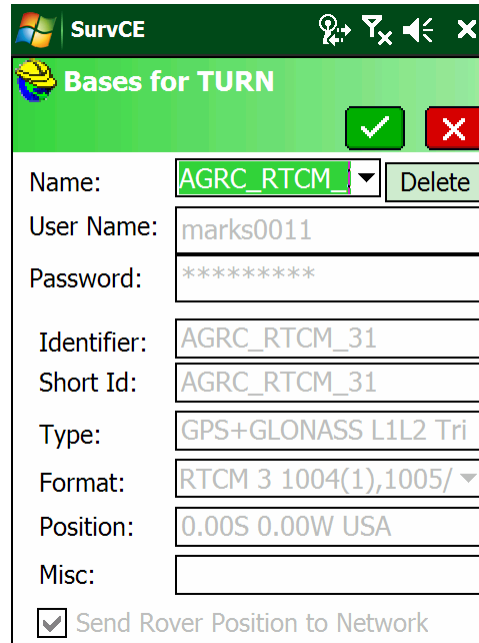
Click on the Green Check Mark, and then the 'RTK' tab:



Set Device to "Data Collector Internet", set Network to "NTRIP", set Port to "Data"; click on the hammer/wrench to the right of the Network: NTRIP:

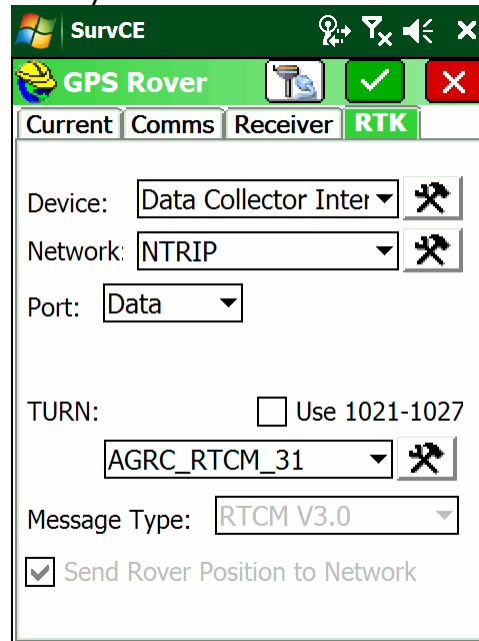


Configure for your NTRIP server. Settings above reflect TURN (The Utah Reference Network.) Username and Password are case sensitive. Click on the Green Check Mark. SurvCE will connect to the NTRIP server and show a list of bases:



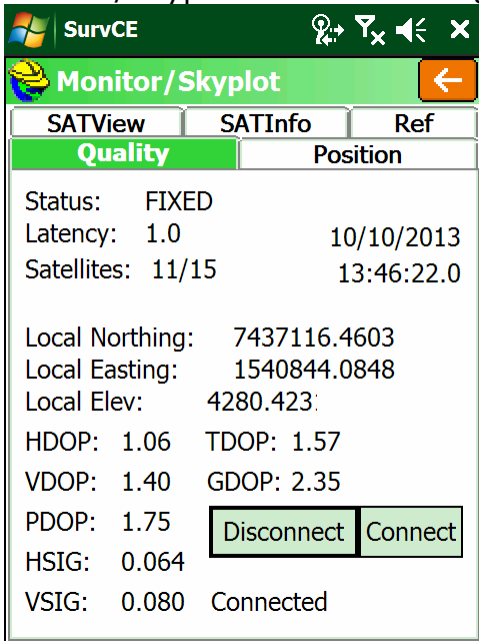
Use the drop down arrow on the 'Name:' to select the RTCM or CMR+ connection for your NTRIP server.

Finally click on the Green Check Mark:



Finally click the Green Check Mark and SurvCE will connect the receiver to the NTRIP network and the receiver.

From the main menu, select "Equip:  
Monitor/Skyplot" and then the Quality tab:



The screenshot shows a software window titled "SurvCE" with a sub-window "Monitor/Skyplot". The "Quality" tab is active, displaying the following data:

Quality		Position
Status:	FIXED	
Latency:	1.0	10/10/2013
Satellites:	11/15	13:46:22.0
Local Northing:	7437116.4603	
Local Easting:	1540844.0848	
Local Elev:	4280.423	
HDOP:	1.06	TDOP: 1.57
VDOP:	1.40	GDOP: 2.35
PDOP:	1.75	
HSIG:	0.064	
VSIG:	0.080	Connected

At the bottom of the Quality tab, there are two buttons: "Disconnect" and "Connect".

If all is well, the receiver will report a 'Fixed' Status.